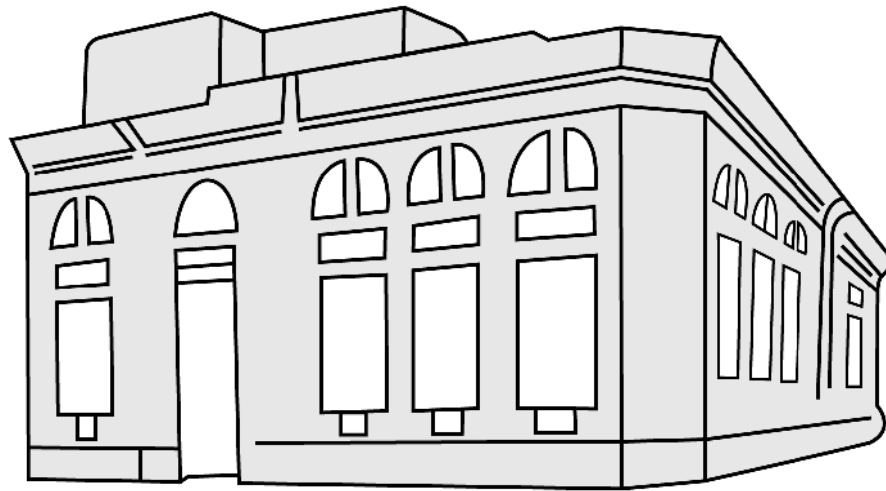


The Village Shul

2008/2009

Membership Guide

THE DAN FAMILY
VILLAGE SHUL



THE FRIEDMANN & BERG FAMILIES
AISH HATORAH LEARNING CENTRE

1072 EGLINTON AVE. WEST, TORONTO, ONTARIO M6C 2E2
PHONE: 416-785-1107 FAX: 416-783-9870 WEB SITE: WWW.VILLAGESHUL.COM

Get to know those who are here to help you:

Please feel free to contact us at:

Phone: 416-785-1107

Or [Email: villageshul@aish.com](mailto:villageshul@aish.com)

For an up-to-date listing of programs and events.

<i>Staff</i>	Name	Extension
Rabbi	Rabbi Ahron Hoch	205
Executive	Mordechai Bookbinder	307
Shul Accountant	Barrie Pollock	202
Building Manager	Richard Bassett	208
Reception/Librarian	Bunny Morris	200
Preschool	Joyce Tradburks	201
Hebrew School	Elaine Rubinoff	300
Mikvah	Chana LeBowitz	501
Custodian	Christina Avelar	305
Rabbi's Assistant	Henny Cohen	316
Youth Director	Sam Weisbrod	306
	Learning Centre Staff	
Educational	Rabbi Ahron Hoch	205
Jewish Family	Bronwyn Shepherd	204
Educational Staff	Adrienne Gold	314

Tribute Cards

The High Holidays are coming. How can you best express your thoughts and feelings to friends and family? Send them a Village Shul Tribute Card. These elegant cards, designed by shul member Beverley D. Burdeyney, are available to be sent to commemorate any occasion in honour or memory of a loved one. Please call Bunny at the office to place your order at 416-785-1107.

From the Rabbi's Desk

Lessons from my Grandchildren

What a blessing it is to have children and grandchildren! As mine live out of town now, you can imagine how special it was for Faigy and I to spend quality time with them this summer. The grandchildren's ages range from one month to 6 years, and along with the joy of just spending time with them, I also had the opportunity to "study" them closely. I want to share with you some of the lessons I learned that are so relevant and important as we approach the High Holidays.

My Yitzchak's oldest son, Aryeh, was born with a deformed right arm that is short and has only two fingers. I marvel at this young man's determination and how much he is able to do with that hand. I

am amazed when I watch him pick up very tiny objects and do intricate activities that one would think are impossible. I take pride at his parent's determination that he be able to accomplish that which any other child can. Aryeh teaches me that all of us face different challenges, but with confidence and determination we can make tremendous breakthroughs.

Pinny's children exhibit genuine excitement and amazement regarding life's experiences. The exuberance and enthusiasm that they convey over any positive experience is a beautiful thing to behold. His children teach me what an incredible gift life is. They remind me how much gratitude we owe to G-d for giving us the opportunity to make every moment an eternal one. My Grandchildren make me conscious of how much we take for granted and how we allow problems to blind us from all of the Almighty's gifts.

My daughter Ora's oldest, Ari, (better known as the "big red head") never ceases to explore and try to understand the way things work. Leaving the door to my study open was always a big mistake. He would rush to the computer and try to figure out what each key does. Ari reminds me that "exploring" with a determination to answer the big questions is the key to the successful life. What is the purpose of life? Why have I been put here? How do we build a good world? How do I raise special children? How do I make sure that I am not stagnating? How important it is to come into Rosh Hashanah and Yom Kippur with answers to these questions.

Obviously, being with the grandchildren leads to the question of what kind of world will they grow up in. I am stunned at how "asleep" we are regarding the dangerous world we live in. We are ignoring Durban II, the open and growing anti Semitism on campus and the growing power of Islamic Fundamentalism etc. I am amazed that my efforts to motivate people to stop "Apartheid Week" on campus resulted in JUST ONE PERSON undertaking a significant initiative. I am amazed at how we will rationalize and create a false reality that everything is fine in order to remain in our comfort zone.

My grandchildren teach me that when we are focused and determined great things can be achieved. They teach me to re-appreciate how special life is and to always be seeking answers to the big questions. My love for them reminds me that we have an individual responsibility to bring G-d into this world through our behavior so we can merit His protection. My love for them reminds me that we can not shy away from the dangers facing us.

The Rabbis in Pirkei Avot teach us "who is the wise person? The one who learns from all people." This summer my grandchildren reminded me how precious that piece of wisdom is.

Rabbi Ahron Hoch

From the President's Desk:

Dear Fellow Member

We are always warned at auctions to be careful when picking up our hands because we may end up buying something we weren't planning upon bidding. I now know the same rule applies when sitting in on meetings where the President's position is being discussed: my hand went up to make my recommendation, and the gavel was put into that hand. I willingly accepted and look forward to serving our Shul and its membership to the best of my ability.

I started my presidency following a 7 ½ year legacy from Richard Posluns. Richard and his fellow directors have dealt with the running of the Shul's affairs unerringly through its many challenges, stemming from our unique roll as both a synagogue structured to serve its members and an outreach centre for Jews of all levels of observance.

This responsibility bears a weighty obligation upon us all. The staff and executive walk a continual tightrope - balancing between operating a fiscally responsible organization serving our members, while also recognizing our obligation to do our share to reach out to the larger community surrounding us. It is this second element which truly gives us our unique flair and vitality. It is the constant inflow of new faces and people which keeps The Village Shul ever evolving and growing – reaching out to larger spheres of influence.

We are like the “little engine that could”. Our membership includes 266 families, yet provides programs that only much larger Shuls offer. Therefore one of our first priorities is to increase the membership to ensure the continuing viability and success of our in-reach and out-reach programs. If each member were to contact me or the office with the name of a friend or neighbour who should be, but is not, a member of our Shul, that would be very helpful.

Growing our Shul membership means increasing our income; it also means being able to welcome new talents and skills into the Shul community to help continue to bolster our every increasing committees and projects.

As you know, in July we sent out our member's renewal package. Within it, we explicitly mentioned some of the fiscal challenges we were facing and briefly outlined how we intended to deal with them. To date, our fundraising plan has been met with enthusiasm. It is our intention to “stay the course” – to focus on fundraising and membership growth until our membership successfully covers our operations, without interrupting service.

Lastly, I want to introduce the current Members of the Board as there has been significant changes from what has been the status quo over the past few years. Your current Board is as follows:

Chairman.....	Barry Bank
President.....	Lou Orzech
Vice-President.....	Arthur Stern
Secretary.....	Vacant
Treasurer.....	Harold Goldberg
Past President (ex-officio)..	Richard Posluns
Directors at Large.....	Ian Rosmarin
	David Markowitz
	Beverley Burdeyney
	Colette Avital
	Nancy Weisbrod
	Allen Berg
Appointed Directors.....	Ted Perlmutter
	Willy Tencer

Please keep in mind that NOT being on the Board does NOT mean that you cannot or should not help to facilitate our programs and events. Our volunteer base extends far beyond the mere confines of the Board (as it must) and we look to YOU to help us out.

You will find that the more involved you become in your community, the more that you get from it – so, get what you can! Please call or email to tell me how you will help and be more involved

I wish you all a very healthy, happy and prosperous new year,

Lou Orzech

2008 MEMBERSHIP BENEFITS

As **THE VILLAGE SHUL** has continued to grow in a dynamic, active way, so too have the services and benefits available to each member. Membership benefits include:

Tax Break

Your membership dues may be tax-receiptable.

Bar/Bat Mitzvahs, Marriage Ceremonies, Funerals

The Rabbi of the Shul is there to consult with members on these important and memorable Lifecycle events.

Pastoral Counselling, Personalized Growth or Coaching Whether it is to seek spiritual, emotional or practical advice, the Rabbi gives priority to Shul members.

Bris and Baby Naming

Members have access to the Main Sanctuary for Brises and Baby Namings.

High Holiday Tickets

All Shul members receive tickets for themselves and immediate family members included in the payment of their dues.

Cemetery Plots

All Shul members will have access to cemetery plots within the Aish HaTorah section of Pardes Shalom Cemetery at member rates.

Class and Program Discounts Discounted program and class fees.

Youth Programming

A vigorous youth program has been organized which will be open to members' children.

Members Programming

On occasion there may be special events designed for members such as Shabbat Chanukah Dinner, Pre-Pesach Shabbat Dinner, or a Succah Party.

Shabbat Meals

The Chesed/Hospitality Committee will send Shabbat meals to members and their families after having a baby, recovering from an illness or having sat Shiva.

Warm Caring Community

Some things cannot be expressed in dollar figures, and knowing that you are part of a community that cares and actively concerns itself with each member is invaluable.

Visitation Committee

The Chesed/Hospitality Committee will arrange to visit hospitalized and ill members as part of a caring community.

Shul Library

A well-stocked library of books, audiotapes and videos has been coordinated for the entire community, of which members will have free access during operating hours.

Yahrzeit Reminders

Members receive mailed reminders noting the day and date prior to the yahrzeit of a loved one.

Priority Room Booking

Only Members receive priority room bookings in advance of 6 months prior to their event.

Toronto's Best Shabbos Kiddush

A Kiddush where cholent, kugel and scrumptious desserts for both adults and children is the norm, and where a hearty "l'chaim" can be heard on a regular basis!

All these benefits together provide a terrific value for your membership fee. Please feel free to direct any questions regarding the above to the Shul office.

What is NCSY at the Village Shul?

NCSY is an international not for profit Jewish youth organization. Now in its 53rd year, NCSY continues to create exhilarating programs, events, and sessions for students in grades 6-12, giving them opportunities of Jewish experience. NCSY is an organization imbued by its founders with an overwhelming desire to build a bright Jewish tomorrow by instilling a love of Torah, create future leaders, and promote unconditional support for the state of Israel.

There are many exciting NCSY programs being offered in The Village Shul and in the Forest Hill community. We have:

- Bar and Bat Mitzvah programs that focus on social and cultural issues and topics facing Jewish teens
- TORAH HIGH, an accredited after-school program, where students can earn a grade 9, 10, 11, 12M or 12U OSSD credit (applicable for grade 8+)
- Accredited summer programs
- Social programs
- Community Service programs (grade 9+)
- Community Friday Night Dinners & Shabbatons (weekend retreats)
- 'Learn and Earn' for students interested in exploring Jewish topics through text
- and much, much more!!!

Programs are appropriate for public, private and day school students.

For more information about our programs or to make a donation please contact:

Shmuel and Elana Soroka @ 647-722-4345 or southchapter@ncsy.ca, or visit us on the web www.ncsy.ca or www.torahhigh.ca.

From the Desk of the Executive Director

“Everything has its season, and there is a time for everything under the heavens.” (Kohellet 3:1)

This year, the Olympics were in China.

Just as the original IOC decision to locate them there was contentious, so too, it seems, each day was fraught with new issues and concerns.

One thing, though, that the Chinese certainly have right is the word “Crisis”. In Chinese, the word for “Crisis” is formed of two separate characters – one meaning “Danger” and one meaning “Opportunity”.

It’s interesting to consider how these two seemingly contrary ideas are brought together in this one thought. Every crisis brings both danger and opportunity.

In the recent membership renewal mailing, we outlined an “Action Plan”, related to the Shul’s financial situation, regarding how we intended to successfully deal with the accumulated shortfall. Deficits are a problem; perpetual deficits are a crisis.

In January of this year, we installed a new Board of Directors with a very new executive. This brings both a “honeymoon period” and a learning curve. Much to their credit, one of the first things the new Board did was to authorize the creation of new committees to assist in the growing and running of our community. Very quickly, new committees have sprung up: Finance, Fundraising, Security, and Legal/Governance. At present, we are also pulling together a Membership Recruitment Committee and a House & Facilities Committee. The Board has used this situation to create opportunities to increase member involvement; and now, things are really on the move.

Furthermore, you will shortly see a fundraising initiative revealed which has already garnered significant acceptance by many of the leaders within our community. Once we have secured our funding, the *real work* will begin – building membership.

So with all due respect to Pete Seeger and The Byrds fans, it was really Shlomo HaMelech (King Solomon) who said it best in Kohellet (Ecclesiastes): “Everything has its season...”. While I don’t want to count my chickens before they’ve hatched, I think that The Village Shul’s “season” has arrived.

Let’s have a great year,

Mordechai Bookbinder MSW

The Village Shul & Aish HaTorah Learning Centre Mission Statement

The mission of the Village Shul & Aish HaTorah Learning Centre is to create a community where each individual can experience Jewish living to enhance personal growth, and where membership is outwardly focused in affecting positive change in the Toronto Jewish community.

Support The Village Shul & Aish HaTorah Learning Centre

A donation to the shul on someone's behalf is a special way of recognizing a friend or loved-one. Your contribution in honour or memory goes a long way in supporting the shul and acknowledging the occasion in a meaningful and lasting way.

In honour/memory of:

On the occasion of:

Relationship (where appropriate):

<input type="checkbox"/>	a Siddur	\$ 50
<input type="checkbox"/>	Sponsor a Morning of Learning	\$50
<input type="checkbox"/>	Rosh Hashanah/Yom Kippur Machzor Set.....	\$120.....
<input type="checkbox"/>	a Chumash	\$100.....
<input type="checkbox"/>	Sponsor a Week of Learning	\$250
<input type="checkbox"/>	A Leaf on the "Tree of Life"	\$280.....
<input type="checkbox"/>	Yahrzeit Plaque	\$480.....
<input type="checkbox"/>	Shabbat Kiddush (other options available).....	\$600.....
<input type="checkbox"/>	Sponsor a Month of Learning	\$1000

All donations are tax-deductible.

Name: _____

Address: _____

Day-time Phone: _____

Cheque Visa # _____ Exp. _____

Signature: _____

For further inquiries and available opportunities, please contact Mordechai Bookbinder at the Shul office 416.785.1107.